

Procedure – Install NSM Client

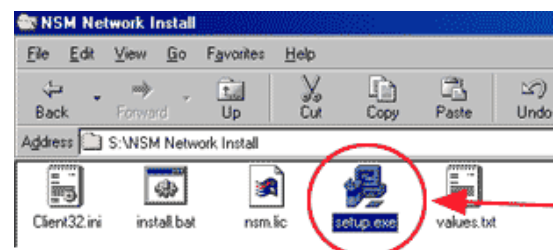
January 2007

<http://www.ict.schools.nt.gov.au/>

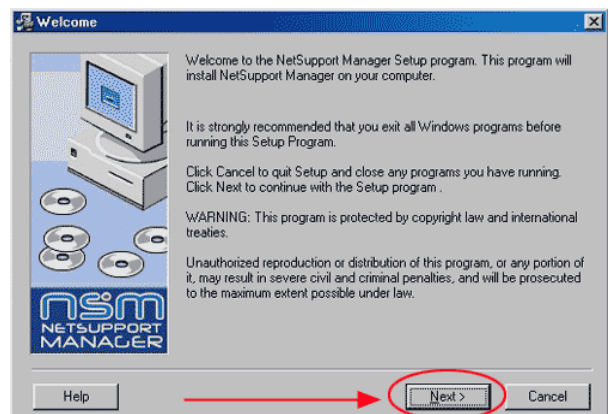
Scope: NSM Client

Description: Install NSM Client

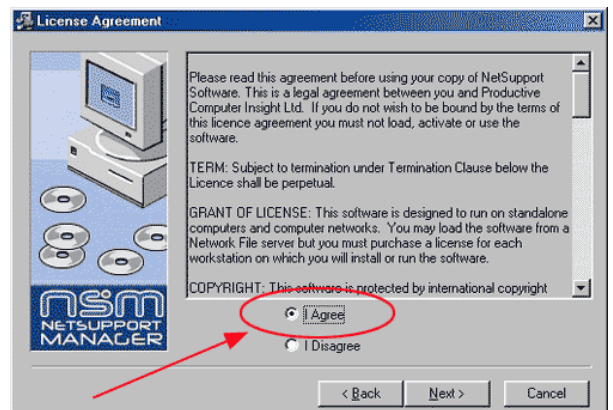
Navigate to the Software share and open the folder '**NSM Network Install**'. Double click the setup icon.



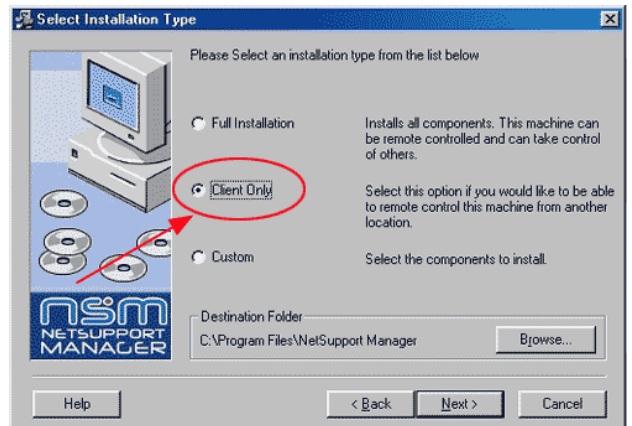
The 'Welcome' screen will appear. Click the '**Next**' button.



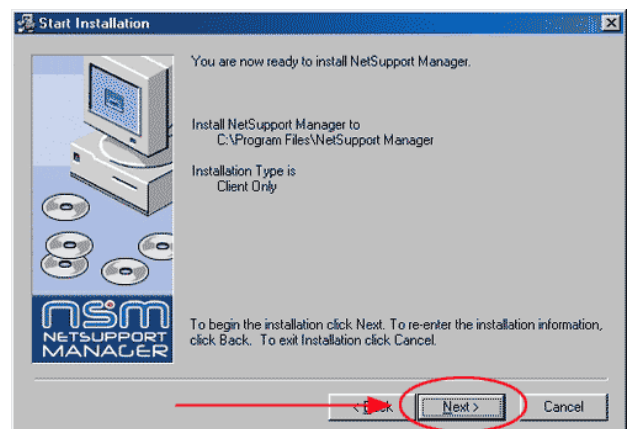
In the 'Licence Agreement' window, click the **I Agree** radio button then click the '**Next**' button.



In the 'Select Installation Type' window, select the '**Client Only**' option then click the '**Next**' button.



In the 'Start Installation' window, click the '**Next**' button.



Click the '**Finish**' button

